

## Specification sheet LX 1573

### Parapet drainage system Series 43 Parapet direct for small roof areas, weir height 40 mm

**Emergency drainage**

**Gravity flow**

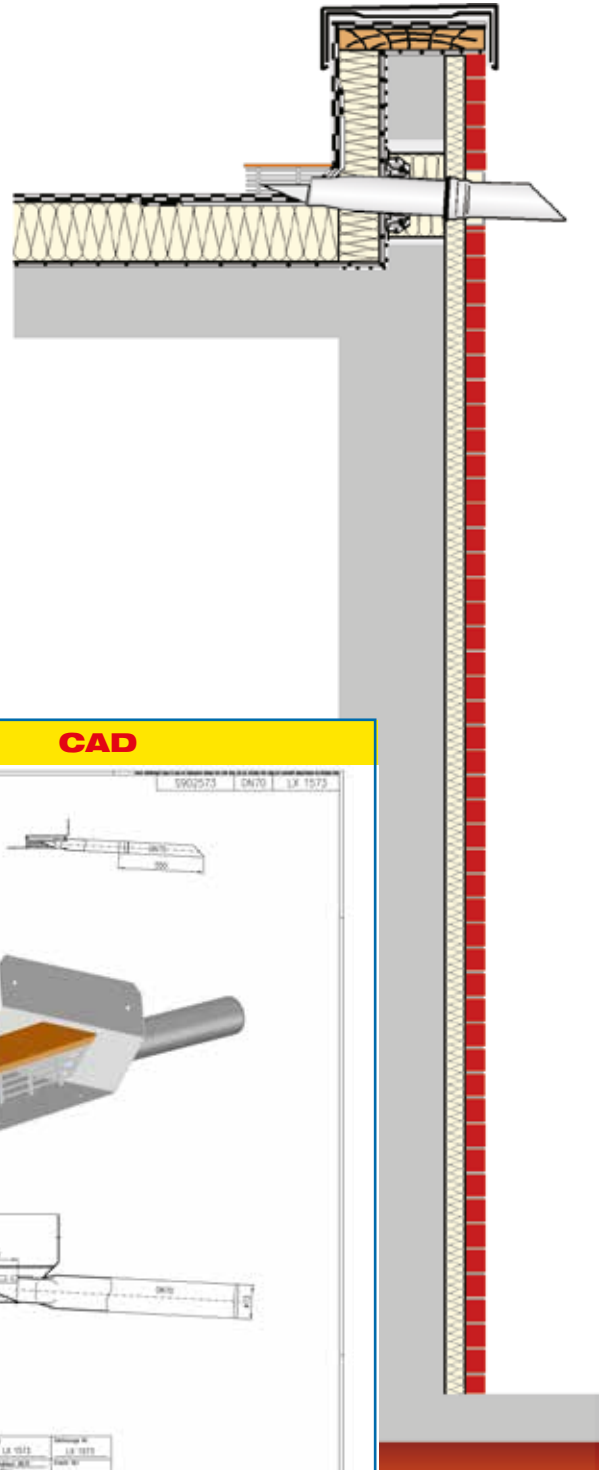
**Silent**

<b>Discharge rate:</b>	<b>1,7 l/sec</b>
<b>Water height:</b>	<b>75 mm</b>
<b>Roof penetration:</b>	<b>0 mm</b>
<b>Diameter:</b>	<b>DN 70</b>
<b>LX-Number:</b>	<b>LX 1573</b>
<b>Weir height:</b>	<b>40 mm</b>
<b>Drain:</b>	<b>ventilated</b>
<b>Downpipe:</b>	<b>ventilated</b>
<b>Downpipe height:</b>	<b>-</b>
<b>Drainage:</b>	<b>on floor</b>
<b>Flangeform:</b>	<b>Bonding flange</b>

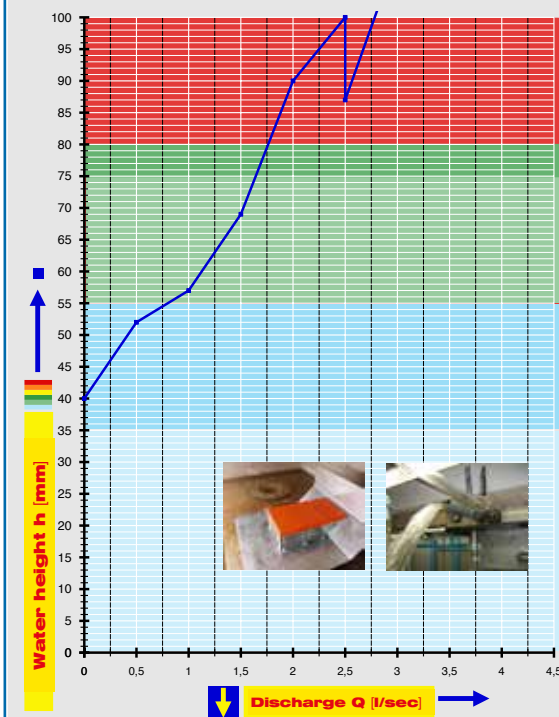
**LX 1573 Piece list**

**1 x Art.-No. choose drain on page two!**

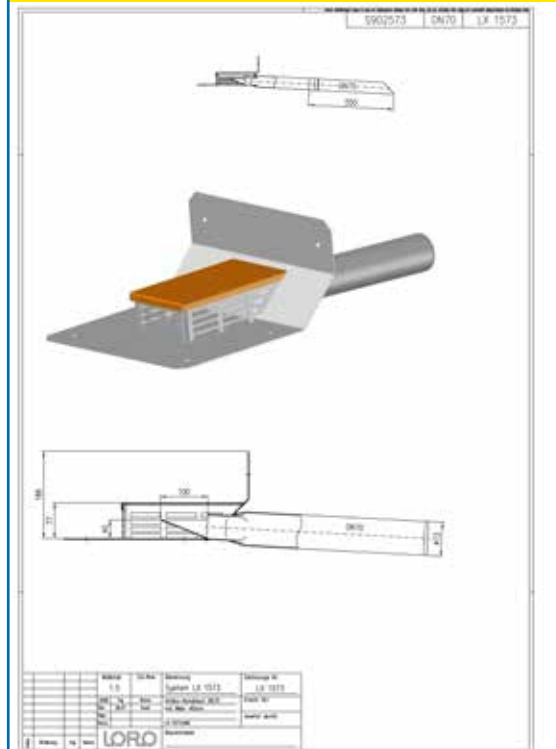
- 1 x Art.-No. 15199.070X, LORO-X Spout
- 1 x Art.-No. 13235.070X, LORO-X Sliding flange
- 1 x Art.-No. 00911.070X, LORO-X Sealing element
- 1 x Art.-No. 00986.000X, LORO-X Lubricant



**hQ - Head-Discharge curve**



**CAD**



**Systempower**

**Systemshape**

<b>Water height</b>	mm	5	10	15	20	25	30	35	40	45	50	55	60	65	70	75
<b>Discharge</b>	l/sec											0,8	1,1	1,3	1,5	1,7
<b>Silent</b>																

**Chosse drain for piece list on page one!**

**DN 70**

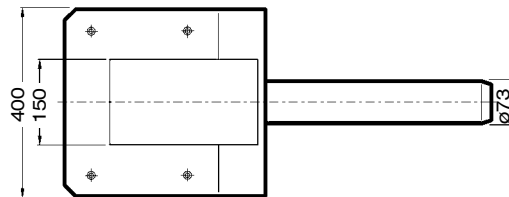
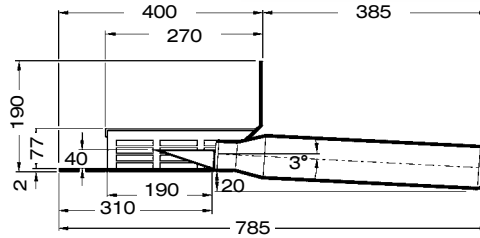
**LX1573-3X**

**Series 43**

Drain Art.-No. 01325.070X

Weight: 5,4 kg

**with bonding flange**  
for bituminous roofing sheets  
**Weir height 40 mm**



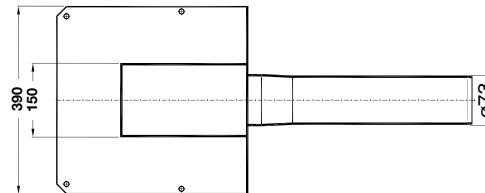
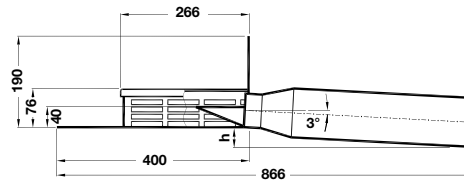
**LX1573-21X**

**Series 43**

Drain Art.-No. 01329.070X

Weight: 5,4 kg

**with bonding flange 90°**  
for liquid plastic  
**40 mm weir height**

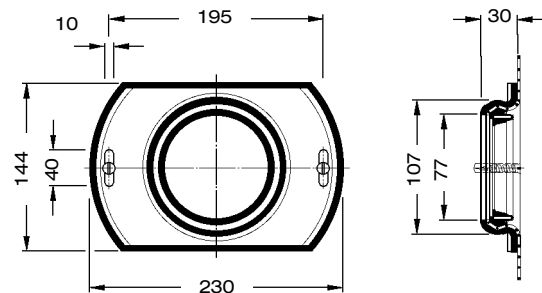


**LORO-X Sliding flange**

with pre-installed connection sleeve for vapor barrier made of bituminous or plastic-roofing sheets (please indicate manufacturer and material of the sealing sheet to be attached), made of galvanized steel, including fastening screws

Art.-No 13235.070X

Weight: 1,4 kg



**Heat tracing:** Lorowerk recommends to check all drains and pipes with regard to their frost-sensibility. Where necessary, these parts should be upgraded with heat tracing.